



DINING AREA

The dining area nods to both Hanne's Australian and European roots. 'My father's Danish, and my mum and dad have the same Hans Wegner Wishbone chairs,' she says. 'When I was growing up, I thought they were the most embarrassing things because they weren't very Eighties.' The artwork is by Aboriginal artist Mitjili Napurrula; see her work at Aboriginal Art Online.

Find Wishbone chairs at danish-design.com. The Isaac dining table is by Philippe Allaeys. The Norm 69 lights are by Normann Copenhagen at Nova 68, and the diamond Ariette light is by Tobia Scarpa from Moss. The candelabras are from Black & Blum.

Hanne's large, open-plan living space incorporates a dining area and kitchen – perfect for keeping an eye on the children, including one-year-old Banjo. The cushion on the sofa (just seen) came from ABC Carpet & Home.

See more shots of this living space at livingetc.com/houses/new_york_apartment.

The property

TYPE Eighth-floor apartment in a converted printing works.

SPACE One-storey, loft-style space, with an open-plan kitchen, dining and living area, three bedrooms, two bathrooms, a laundry room and play/guest room.

LOCATION Tribeca, Manhattan, New York.



LOVE AT FIRST SIGHT

Trusting their instincts has paid dividends for Hanne and Angus, who turned a run-down apartment into a cool and quirky family home

WORDS TESSA CLAYTON | PHOTOGRAPHY HALLIE BURTON | STYLING LILI DIALLO



LIVING AREA

Light floods into the room through seven big windows. The rug was designed by local flooring company Aronsons Floor Covering. 'Trying to find something that would tone with the bright pink in the kitchen, as well as the earthiness of all the natural wood, was hard,' says Hanne. 'We chose the colours for this one. And because there are so many stripes, you don't notice if someone spills something on it.'

Hanne's circular coffee table and Shell chairs are all by Hans Wegner at House of Copenhagen. The Scando tables are by Eric Pfeiffer at Nova 68. The sideboard is from Modern Living Supplies. The bookcase is made up of Perf stackable boxes by Eric Pfeiffer for Offi at Hive Modern. The cushions decorated with text are Google News cushions from Spring 3D. The stainless-steel flower bowl is from Ikea.

With four young children and hectic work lives, Hanne Larsen and Angus Dobbie aren't the kind of people to hang around. So when they first clapped eyes on their family-sized apartment in buzzing Tribeca, in downtown Manhattan, they snapped it up in minutes – even though it was the first property they'd seen. 'A friend tried to rein us in by asking me whether I'd bought the first wedding dress I'd seen. I had to confess I actually had!'

It may have seemed like an impulsive gesture, but Hanne and her banker husband, Angus, who moved to New York from their native Australia three years ago, had a very clear picture of what they were looking for. 'We wanted a space with good natural light and a sense of openness. Perhaps we were yearning for Australia,' says Hanne, who runs a dance school. 'It was also quite rustic and basic, and we really wanted somewhere that hadn't been overly "done" in someone else's taste.'

However, open plan and tiny children don't always mix. 'We knew we wanted some closed-off spaces, so the children could sleep and we could entertain simultaneously, but none of the existing walls actually reached the ceiling,' recalls Hanne. There were other, more worrying concerns. 'Most of the lighting consisted of electrical cords wrapped around pipes with fixtures hanging from them. Plus, there was a window on a level with the bath that I could just see the children falling out of...'

The only realistic solution for the couple was to rip everything out and start again. They moved into rented accommodation with India, now eight, Atticus, six, and Arlo, four, for nine months while their builders moved in. 'It was a bit of a nightmare,' admits Hanne. 'I was pregnant, the neighbours were always complaining, and most of our life was in boxes.' Inevitable >

KITCHEN

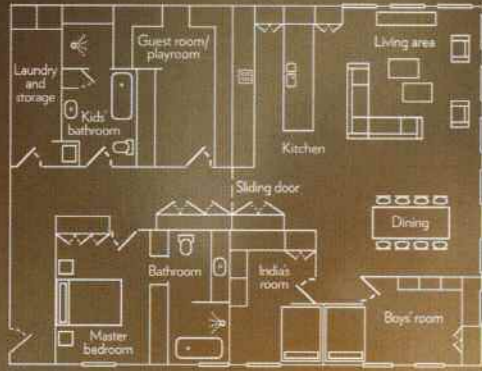
Cool greys and white provide a muted backdrop for the striking hot-pink chairs and splashback. 'I wanted a painted-glass splashback,' says Hanne, 'and I thought, "Why not a pink one?" Pink's a bit of a thing with me; I even have pink hair at the moment. I thought Angus would say, "No way!" but thankfully he went with it.'

Hanne's kitchen units were designed by Ghislaine Viñas Interior Design, but Molten London does doors in a similar style. Specialist Glass Products supplies back-painted glass. The pink Arne Jacobsen Series 7 bar stools are from the Fritz Hansen Collection at Karkula.



What they did

- Ripped out all the existing fixtures and fittings.
- Built partition walls to create eight rooms.
- Removed false ceilings to give rooms an extra 3ft in height.
- Replumbed and rewired.
- Fitted a new kitchen and two new bathrooms.
- Boxed in the pipework and air conditioning.
- Created bunk beds and a mezzanine playhouse for the children.
- Installed a floor-to-ceiling sliding door to divide the apartment in two.



MASTER BEDROOM

The bright colours that characterise the rest of the apartment are banished from Hanne and Angus's bedroom. 'It's quite calm and muted by comparison, as we were looking for some peace,' says Hanne. 'We used the print above the bed, which is by Australian artist Selina Woolcott-Forbes, as the starting point, and pulled the look together from there.'

Ikea's Knappa Klover light is in this style. The picture on the windowsill is Australian artist John Olsen's *Beckett Passing By*. Hanne bought the vintage bedside table on eBay.

BOYS' BEDROOM

The clever bunks are not only fun for the boys, they make the most of 'dead' vertical space in the room. They were designed by Ghislaine Viñas Interior Design and built by Solid Solutions Group.

For plain white bunks, try Chic Shack. Find an Eames rocker at The Lollipop Shoppe. Find similar bed linen at Olli and Lime.

CHILDREN'S BATHROOM

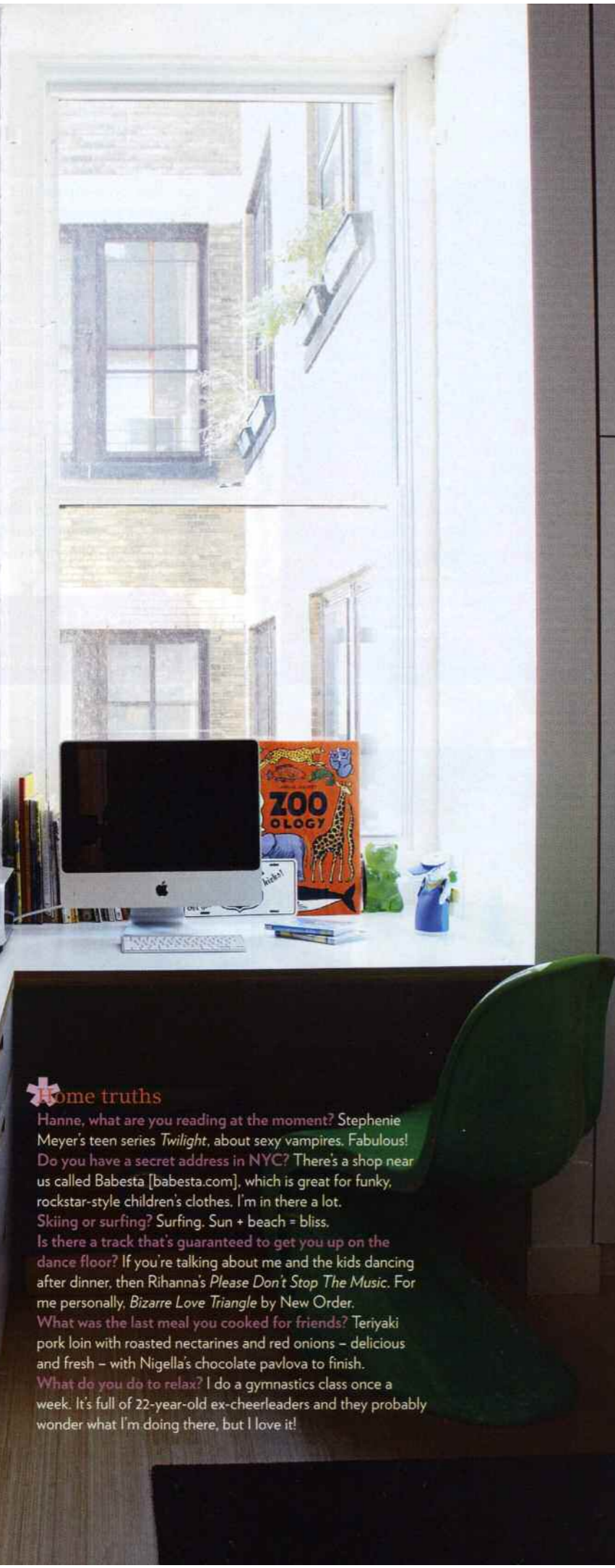
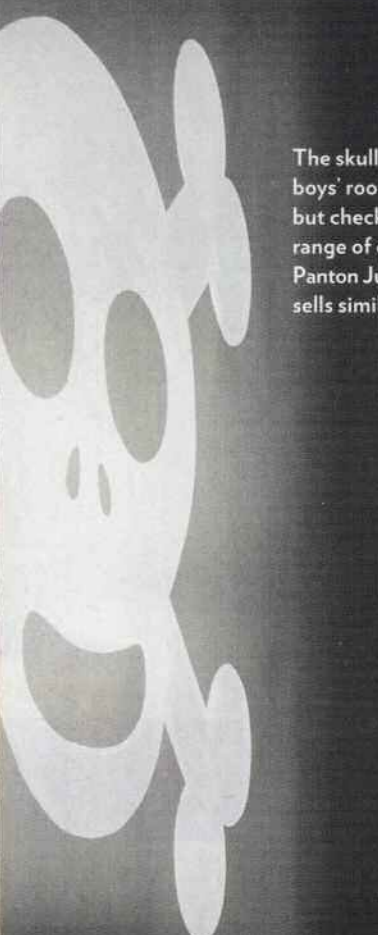
The sink was originally in the kitchen. 'We refinished it and painted the outside green to match the room,' says Hanne. 'The floor tiles have a grass motif. I thought it was appropriate for city kids who rarely get to experience the real thing.'

Find grass-print floor tiles at Harvey Maria. The Liquid Raindrop pendant lamps above the mirror are by Hopf & Wortmann for Next Design at Nova 68. Ikea carries plastic stools like these.



 **ONLINE EXTRA**
See more images of Hanne and Angus's New York apartment at livingetc.com/houses/new_york_apartment.

The skull and crossbones in the boys' room was painted by a friend, but check out Supernice for a great range of graphic stickers. Find a Panton Junior chair at Chaplins. B&Q sells similar modular bedroom units.



Some truths

Hanne, what are you reading at the moment? Stephenie Meyer's teen series *Twilight*, about sexy vampires. Fabulous! Do you have a secret address in NYC? There's a shop near us called Babesta [babesta.com], which is great for funky, rockstar-style children's clothes. I'm in there a lot. Skiing or surfing? Surfing. Sun + beach = bliss. Is there a track that's guaranteed to get you up on the dance floor? If you're talking about me and the kids dancing after dinner, then Rihanna's *Please Don't Stop The Music*. For me personally, *Bizarre Love Triangle* by New Order. What was the last meal you cooked for friends? Teriyaki pork loin with roasted nectarines and red onions – delicious and fresh – with Nigella's chocolate pavlova to finish. What do you do to relax? I do a gymnastics class once a week. It's full of 22-year-old ex-cheerleaders and they probably wonder what I'm doing there, but I love it!

IN THE PINK

Hanne and Angus mixed vibrant pink with earthy concrete to create a striking contrast. They took the exact tone from the bar stools and used it for the splashback. Dulux can match any colour to your specific requirement if you provide a sample or swatch. For a concrete worktop, try White & Reid, which does a variety of shades and finishes.



CLOCKWISE FROM ABOVE Tropical tumbler, £2, Asda. Bar stool, £165, Dan-form at Mac & Mac Interiors. Metallic bowl, £29.50, Marks & Spencer.

IDEAS TO STEAL
from Hanne and Angus's apartment



ROOM FOR FUN

The kids' playroom has a series of fun, interactive features. Ladders leading up to a mezzanine level and play holes to look and poke limbs through create a mini adventure room. If you want to make something similar, contact an approved tradesperson at myhammer.com for help with building.

CLOCKWISE FROM RIGHT Rolly round coffee table, £695, Heal's. Central stripy rug, £74, WovenGround. Skinny Venus sofa, £1,210, Sofa.com



For stockist details, see page 128